

**JAFFRAY
ESTATES**

Portman Square, Marylebone, London W1

Asking Price: £1,395,000

Leasehold 133 Years



A spacious and well-proportioned bright 1 bedroom apartment in a sought after 24-hour portered block in Portman Square.

The apartment is in good decorative order and would make an ideal central London location.

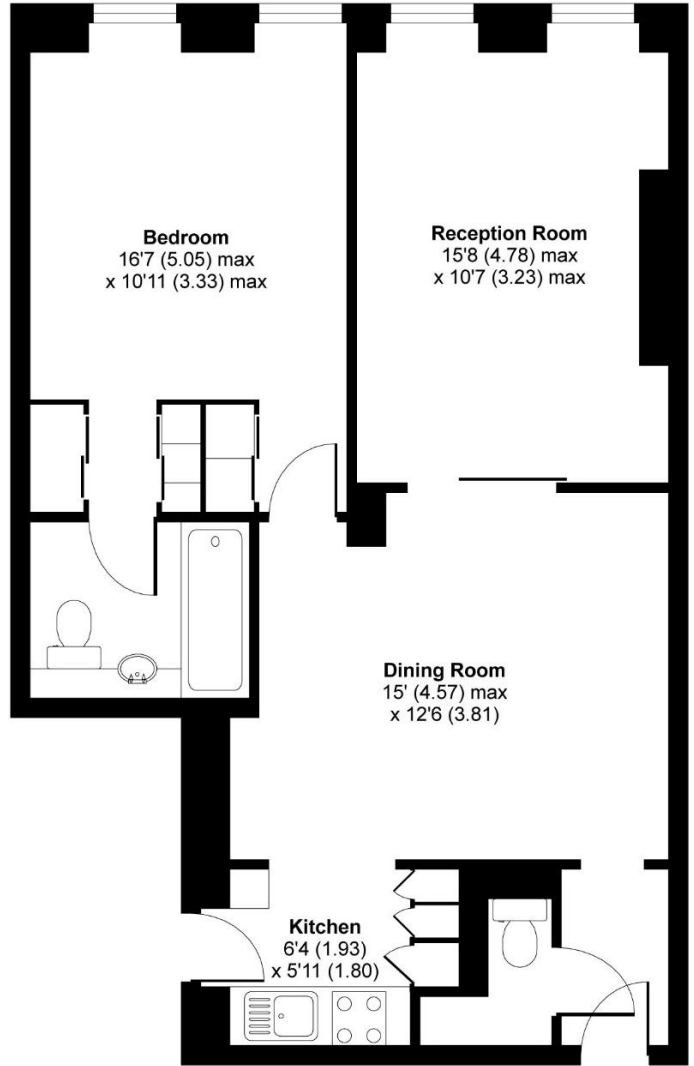
Reception Room | Kitchen | Dining Room |
Bedroom | En-suite Bathroom

Utility Room | 5th Floor | Lift | Porter | Private
Garden Square | EPC RATING C

JAFFRAY ESTATES
7 New Quebec Street, London, W1H 7RH | 020 3091 9311
www.jaffray-estates.co.uk

Portman Square, Marylebone, London W1

JAFFRAY
ESTATES



FIFTH FLOOR

Notice: Particulars: These particulars are not an offer or contract, nor part of one. You should not rely on statements by Jaffray Estates Limited in the particulars or by word of mouth or in writing ("information") as being factually accurate about the property, its condition or its value. Neither Jaffray Estates Limited nor any joint agent has any authority to make any representations about the property, and accordingly any information given is entirely without responsibility on the part of the agents, seller(s) or lessor(s). Photos etc: The photographs show only certain parts of the property as they appeared at the time they were taken. Areas, measurements and distances given are approximate only. Regulations etc: Any reference to alterations to, or use of, any part of the property does not mean that any necessary planning, building regulations or other consent has been obtained. A buyer or lessee must find out by inspection or in other ways that these matters have been properly dealt with and that all information is correct. Jaffray Estates Limited is registered in England with registered number 9297651. Our registered office is 20 Norland Square, London, W11 4PU



JAFFRAY ESTATES
7 New Quebec Street, London, W1H 7RH | 020 3091 9311
www.jaffray-estates.co.uk