

# JAFFRAY ESTATES

**Montagu Square, Marylebone, London W1**

**Asking Price: £2,950,000**

**Share of Freehold (995 years lease)**



An exceptional 2 bedroom 2 bathroom apartment (1,160sqft/108sqm) for sale overlooking Montagu Square gardens. The apartment is exceptionally bright, with a dual aspect and opportunity to create 3 bedrooms.

Reception Room | Dining Room | Kitchen  
Master Bedroom | Second Bedroom | 2  
Bathrooms | 3rd Floor | Lift | Porter | Private  
Garden Square



# Montagu Square, Marylebone, London W1

JAFFRAY  
ESTATES



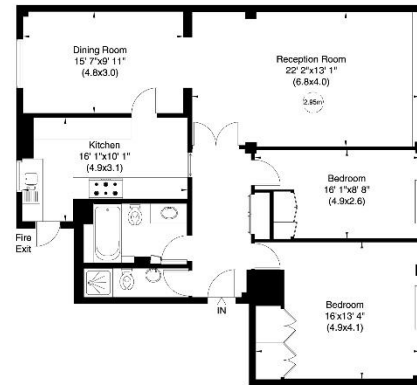
## Montagu Court, Montagu Square, W1

Gross internal area (approx.)

108 Sq m (1160 Sq ft)

For identification only, Not to Scale

Floor Plan by **capitalgroup** 020 8671 7722



Third Floor

Not to scale, for guidance only and must not be relied upon as a statement of fact. All measurements and areas are approximate only (and have been prepared in accordance with the current edition of the RICS Code of Measuring Practice).

Notice: Particulars: These particulars are not an offer or contract, nor part of one. You should not rely on statements by Jaffray Estates Limited in the particulars or by word of mouth or in writing ("information") as being factually accurate about the property, its condition or its value. Neither Jaffray Estates Limited nor any joint agent has any authority to make any representations about the property, and accordingly any information given is entirely without responsibility on the part of the agents, seller(s) or lessor(s). Photos etc: The photographs show only certain parts of the property as they appeared at the time they were taken. Areas, measurements and distances given are approximate only. Regulations etc: Any reference to alterations to, or use of, any part of the property does not mean that any necessary planning, building regulations or other consent has been obtained. A buyer or lessee must find out by inspection or in other ways that these matters have been properly dealt with and that all information is correct. Jaffray Estates Limited is registered in England with registered number 9297651. Our registered office is 20 Norland Square, London, W11 4PU



JAFFRAY ESTATES  
7 New Quebec Street, London, W1H 7RH | 020 3091 9311  
www.jaffray-estates.co.uk