

# JAFFRAY ESTATES

## Montagu Mansions, Marylebone, London W1

Asking Price: £2,295,000

Share of Freehold



An absolutely stunning interior designed 3 bedroom 2 bathroom apartment in one of Marylebone's most popular red-brick mansion blocks, befitting from uniformed 24-hour portage and a share of the freehold.

Reception Room | Semi-Open Plan Kitchen  
Master En-Suite Bedroom | 2 Further Bedrooms  
2<sup>nd</sup> Bathroom

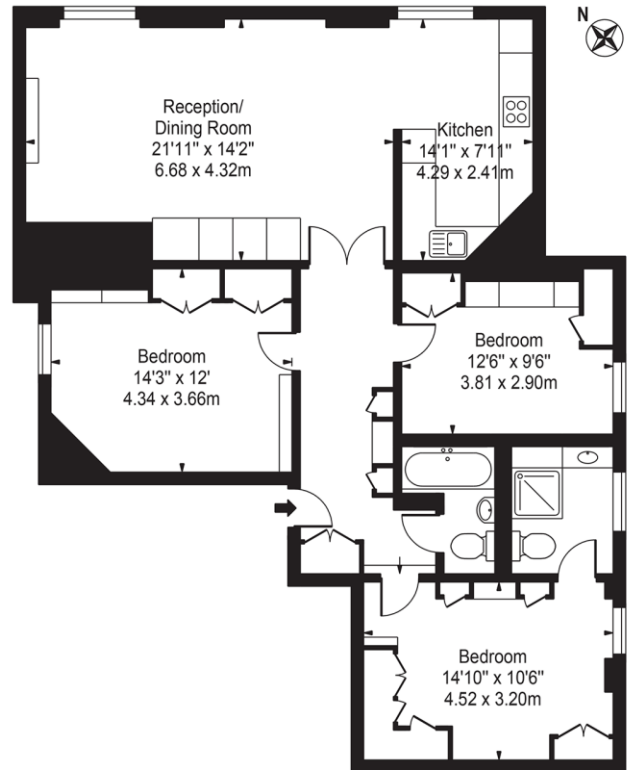
1st Floor | Lift | 24-Hour Porter | Square | EPC  
RATING B

# Portman Square, Marylebone, London W1

**JAFFRAY  
ESTATES**



## Montagu Mansions Approx. Gross Internal Area 1104 Sq Ft - 102.56 Sq M



First Floor

For Illustration Purposes Only - Not To Scale

This floor plan should be used as a general outline for guidance only and does not constitute in whole or in part an offer or contract. Any intending purchaser or lessee should satisfy themselves by inspection, searches, enquiries and full survey as to the correctness of each statement. Any areas, measurements or distances quoted are approximate and should not be used to value a property or be the basis of any sale or let.

Notice: Particulars: These particulars are not an offer or contract, nor part of one. You should not rely on statements by Jaffray Estates Limited in the particulars or by word of mouth or in writing ("information") as being factually accurate about the property, its condition or its value. Neither Jaffray Estates Limited nor any joint agent has any authority to make any representations about the property, and accordingly any information given is entirely without responsibility on the part of the agents, seller(s) or lessor(s). Photos etc: The photographs show only certain parts of the property as they appeared at the time they were taken. Areas, measurements and distances given are approximate only. Regulations etc: Any reference to alterations to, or use of, any part of the property does not mean that any

necessary planning, building regulations or other consent has been obtained. A buyer or lessee must find out by inspection or in other ways that these matters have been properly dealt with and that all information is correct. Jaffray Estates Limited is registered in England with registered number 0207651. Our registered office is 20 Newland Square, London, W11 4PL.



**JAFFRAY ESTATES**  
7 New Quebec Street, London, W1H 7RH | 020 3091 9311  
[www.jaffray-estates.co.uk](http://www.jaffray-estates.co.uk)