

**JAFFRAY
ESTATES**

Baker Street, Marylebone, London NW1

Asking Price: £2,650,000

Leasehold: 94 Years



An exceptional interior designed 4 bedroom apartment that has been reconfigured and refurbished to a high standard throughout in a sought after 24-hour portered mansion building on Baker Street.

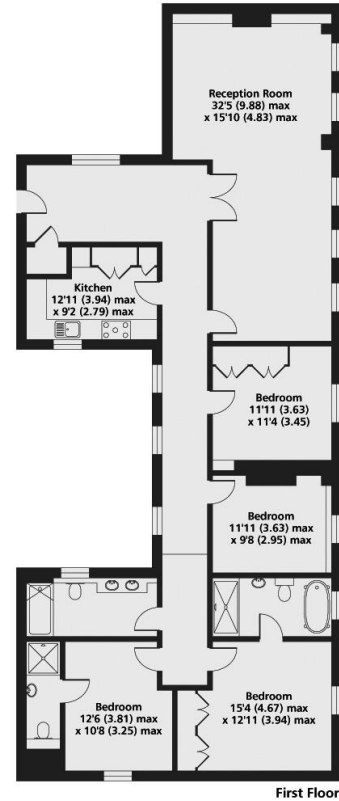
Double Reception Room | Kitchen | 4 Bedrooms | 3 Bathrooms (2 En-suite)

1st Floor | Lift | 24-Hour Porter | EPC RATING
C

JAFFRAY ESTATES
7 New Quebec Street, London, W1H 7RH | 020 3091 9311
www.jaffray-estates.co.uk

Baker Street, Marylebone, London NW1

JAFFRAY
ESTATES



Chiltern Court NW1

Gross Internal Floor Area 1735 sqft 161.1 sqm

Copyright nichecom.co.uk 2016 REF : 92224

Whilst every attempt has been made to ensure the accuracy of the floor plan contained here, measurements of doors, windows and rooms are approximate and no responsibility is taken for any error, omission or misstatement. These plans are for representation purposes only as defined by RICS Code of Measuring Practice and should be used as such by any prospective purchaser. Specifically no guarantee is given on the gross internal floor area of the property if quoted on this plan and any figure given is for initial guidance only and should not be relied on as a basis of valuation.

Notice: Particulars: These particulars are not an offer or contract, nor part of one. You should not rely on statements by Jaffray Estates Limited in the particulars or by word of mouth or in writing ("information") as being factually accurate about the property, its condition or its value. Neither Jaffray Estates Limited nor any joint agent has any authority to make any representations about the property, and accordingly any information given is entirely without responsibility on the part of the agents, seller(s) or lessor(s). Photos etc: The photographs show only certain parts of the property as they appeared at the time they were taken. Areas, measurements and distances given are approximate only. Regulations etc: Any reference to alterations to, or use of, any part of the property does not mean that any

necessary planning, building regulations or other consent has been obtained. A buyer or lessee must find out by inspection or in other ways that these matters have been properly dealt with and that all information is correct. Jaffray Estates Limited is registered in England with registered number 0207651. Our registered office is 20 Notland Square, London, W41 4PU.



JAFFRAY ESTATES

7 New Quebec Street, London, W1H 7RH | 020 3091 9311

www.jaffray-estates.co.uk