

**JAFFRAY
ESTATES**

Portman Square, Marylebone, London W1

Asking Price: £2,295,000

Leasehold 134 Years



A simply stunning new interior designed 3 bedroom, 3 bathroom (2 en-suite) apartment in a popular Art Deco building with 24-hour porter on a long lease.

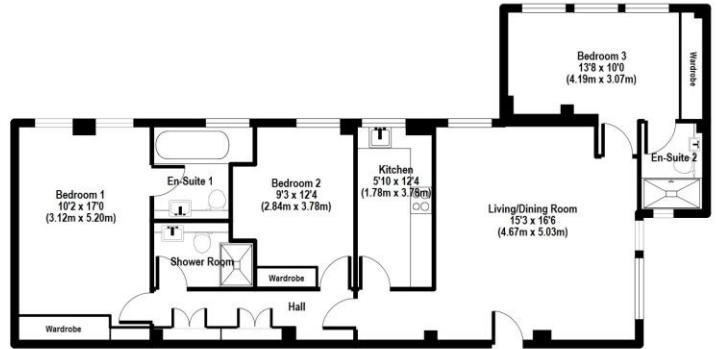
Reception Room | Kitchen | 3 Bedrooms | 2 En-suite Bathrooms | Further Bathroom

24-Hour Porter | Private Garden Views | EPC RATING C

JAFFRAY ESTATES
7 New Quebec Street, London, W1H 7RH | 020 3091 9311
www.jaffray-estates.co.uk

Portman Square, Marylebone, London W1

JAFFRAY
ESTATES



APPROX GROSS INTERNAL FLOOR AREA: 995 sq. ft / 92.4 sq. m

Portman Square

FOR ILLUSTRATIVE PURPOSES ONLY. NOT TO SCALE.
Whilst every attempt has been made to ensure the accuracy of the floor plan shown, all measurements, positioning, features, fixtures and any other data shown are an approximate interpretation for illustrative purposes only and are not to scale. No responsibility is taken for any error, omission, mis-statement or use of data shown.

Notice: Particulars: These particulars are not an offer or contract, nor part of one. You should not rely on statements by Jaffray Estates Limited in the particulars or by word of mouth or in writing ("information") as being factually accurate about the property, its condition or its value. Neither Jaffray Estates Limited nor any joint agent has any authority to make any representations about the property, and accordingly any information given is entirely without responsibility on the part of the agents, seller(s) or lessor(s). Photos etc: The photographs show only certain parts of the property as they appeared at the time they were taken. Areas, measurements and distances given are approximate only. Regulations etc: Any reference to alterations to, or use of, any part of the property does not mean that any

necessary planning, building regulations or other consent has been obtained. A buyer or lessee must find out by inspection or in other ways that these matters have been properly dealt with and that all information is correct. Jaffray Estates Limited is registered in England with registered number 0207651. Our registered office is 20 Notland Square, London, W14 4PU.



JAFFRAY ESTATES
7 New Quebec Street, London, W1H 7RH | 020 3091 9311
www.jaffray-estates.co.uk