

**JAFFRAY
ESTATES**

Portman Square, Marylebone, London W1

Asking Price: £2,495,000

Leasehold



A rarely available 4 bedroom apartment on the 4th floor, with a lift, directly overlooking Portman Square, requiring full modernisation, in a secure and well maintained Art Deco 24-hour portered block.

Reception Room | Kitchen | Dining Room | 4 Bedrooms | 2 Bathrooms

4th Floor | Lift | 24-Hour Porter | Private Garden Square | EPC RATING C

JAFFRAY ESTATES
7 New Quebec Street, London, W1H 7RH | 020 3091 9311
www.jaffray-estates.co.uk

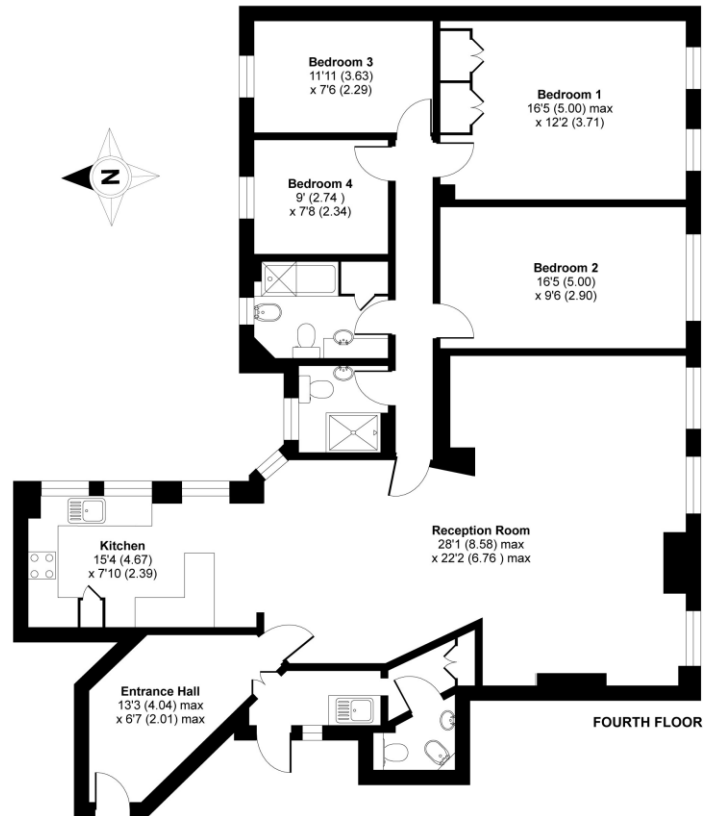
Portman Square, Marylebone, London W1

**JAFFRAY
ESTATES**



Portman Square, London, W1H

APPROX. GROSS INTERNAL FLOOR AREA 1552 SQ FT 144.1 SQ METRES



Whilst every attempt has been made to ensure the accuracy of the floor plan contained here, measurements of doors, windows and rooms are approximate and no responsibility is taken for any error, omission or misstatement. These plans are for representation purposes only as defined by RICS Code of Measuring Practice and should be used as such by any prospective purchaser. Specifically no guarantee is given on the total square footage of the property if quoted on this plan. Any figure given is for initial guidance only and should not be relied on as a basis of valuation.

Copyright nichecom.co.uk 2018 Produced for Jaffray Estates LTD REF : 333439

Notice: Particulars: These particulars are not an offer or contract, nor part of one. You should not rely on statements by Jaffray Estates Limited in the particulars or by word of mouth or in writing ("information") as being factually accurate about the property, its condition or its value. Neither Jaffray Estates Limited nor any joint agent has any authority to make any representations about the property, and accordingly any information given is entirely without responsibility on the part of the agents, seller(s) or lessor(s). Photos etc: The photographs show only certain parts of the property as they appeared at the time they were taken. Areas, measurements and distances given are approximate only. Regulations etc: Any reference to alterations to, or use of, any part of the property does not mean that any

necessary planning, building regulations or other consent has been obtained. A buyer or lessee must find out by inspection or in other ways that these matters have been properly dealt with and that all information is correct. Jaffray Estates Limited is registered in England with registered number 0207651. Our registered office is 20 Notland Square, London, W14 4PU.



JAFFRAY ESTATES
7 New Quebec Street, London, W1H 7RH | 020 3091 9311
www.jaffray-estates.co.uk