

JAFFRAY ESTATES

Portman Square, Marylebone, London W1

Asking Price: £4,950,000

Leasehold



A substantial family apartment, with 11 windows overlooking Portman Square gardens, situated on an upper floor in a secure 1930's Art Deco block, located moments from Selfridges and Bond Street.

Reception Room | Dining Room | Kitchen | 7
Bedrooms | 6 Shower Rooms (5 En-Suite)

5th Floor | Lift | 24-Hour Porter | Private Garden
Square | EPC Rating C

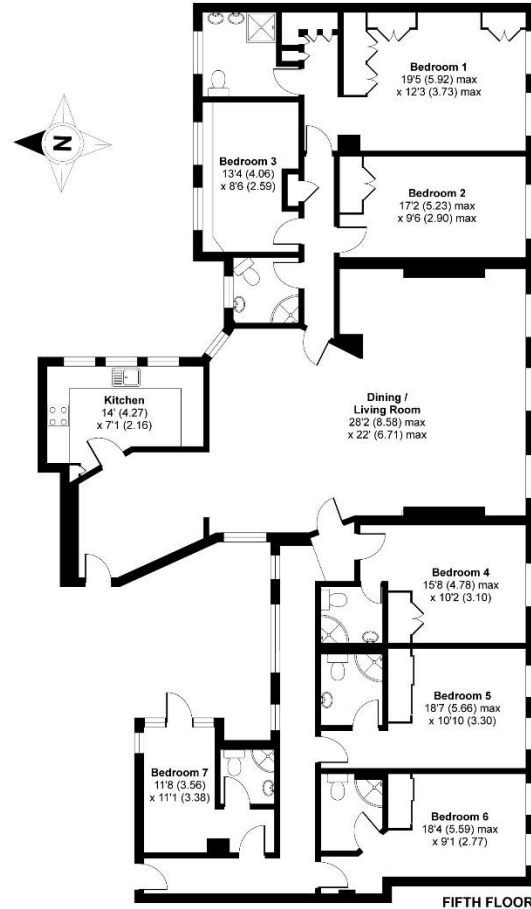
Portman Square, Marylebone, London W1

JAFFRAY
ESTATES



Portman Square, London, W1H

APPROX. GROSS INTERNAL FLOOR AREA 2439 SQ FT 226.6 SQ METRES



Whilst every attempt has been made to ensure the accuracy of the floor plan contained here, measurements of doors, windows and rooms are approximate and no responsibility is taken for any error, omission or misstatement. These plans are for representation purposes only as defined by RICS Code of Measuring Practice and should be used as such by any prospective purchaser. Specifically no guarantee is given on the total square footage of the property if quoted on this plan. Any figure given is for initial guidance only and should not be relied on as a basis of valuation.

Copyright nichecom.co.uk 2018 Produced for Jaffray Estates LTD REF : 405821

Notice: Particulars: These particulars are not an offer or contract, nor part of one. You should not rely on statements by Jaffray Estates Limited in the particulars or by word of mouth or in writing ("information") as being factually accurate about the property, its condition or its value. Neither Jaffray Estates Limited nor any joint agent has any authority to make any representations about the property, and accordingly any information given is entirely without responsibility on the part of the agents, seller(s) or lessor(s). Photos etc: The photographs show only certain parts of the property as they appeared at the time they were taken. Areas, measurements and distances given are approximate only. Regulations etc: Any reference to alterations to, or use of, any part of the property does not mean that any necessary planning, building regulations or other consent has been obtained. A buyer or lessee must find out by inspection or in other ways that these matters have been properly dealt with and that all information is correct. Jaffray Estates Ltd is a limited company registered in England and Wales at A9 Sloane Avenue Mansions, SW3 3JF with Company Registration Number 9297651 and VAT Registration Number 204 8311 42



JAFFRAY ESTATES
7 New Quebec Street, London, W1H 7RH | 020 3091 9311
www.jaffray-estates.co.uk